



THE WEDDING COLLECTION / SS25

**SUIT DIRECT**



## VISIONS OF SUMMER

Spring is here.  
The mornings are brighter.  
Nights are lighter.  
A season of weddings begins.  
Aisle to after-party. First look to final toast.  
Sun on shoulders, laughter in the air,  
love lingers. When what you wear is  
part of the scene. Turning moments  
into lifetime memories.

The summer of weddings is here.

# THE BLAKE COLLECTION

The Blake by Antique Rogue combines classic British tailoring with distinctive detailing, making this a favourite for weddings. Unique linings, buttons and detail stitching along with a hummingbird pin design make this a standout suit for a special occasion.



The Antique Rogue Blake collection is crafted with extra stretch for added comfort.





## THE BLAKE SEAFOAM

Explore tonal colours to complement your wedding scheme. Pair your suit with a matching shirt and tie for a clean, coordinated look. You can mix textures for added depth without losing the balance.

Other colours available:



*Antique Rogue Blake Seafoam  
single- and double-breasted*

# THE BLAKE ECRU

The Blake Ecu is available in single and double-breasted options. Stand out as the groom on your big day with a feature double-breasted jacket whilst your groomsmen wear the complementary single-breasted jacket.

*Antique Rogue Blake Ecu  
single and double-breasted  
2 or 3-piece suit*







## THE BLAKE IVORY

*Antique Rogue Blake Ivory*



Shades of cream are a stylish choice for weddings this SS25, offering a fresh, elegant look. With their soft, neutral tone, they're perfect for both daytime and evening celebrations, providing a timeless option for grooms and guests alike.



*Ted Baker Tilson Blue Sharkskin suit  
Also available in rose, light grey,  
and stone with matching waistcoat.*

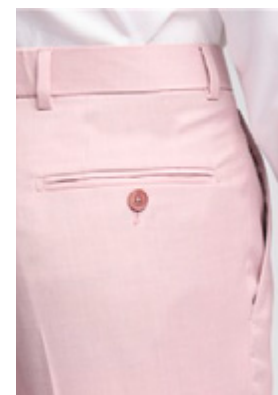
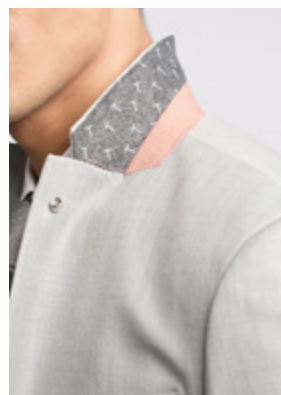
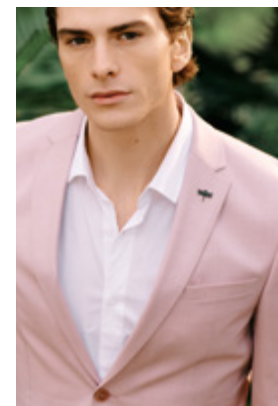
## THE PASTELS

Bring the colours of summer to your wedding party with our collection of pastel suits. From soft sky blues to warm creams and subtle pinks, these suits are crafted with clean lines and soft textures for a look that is both bold and balanced. Available in a range of fits and styles, these suits are perfect for a sophisticated summer celebration.






*Ted Baker Burra Rose Sharkskin suit  
Also available in blue, light grey,  
and stone with matching waistcoat*



Shades of pink are a stylish alternative to classic suit colours. From subtle blush to bold rose, there's a pink for every style — whether you're aiming for a refined look or standing out with confidence.

 Wool blend for durability and breathability.



# THE BLACK TIE

A dress code that transcends trends. The tux, the waistcoat, the perfectly fitted trousers, and crisp white shirt – every detail of black tie speaks of elegance. The groom in cream, the best men in classic black – coordinated for a look that's both sophisticated and timeless, whether under the summer sun or beneath the stars.





*Antique Rogue Huxley double-breasted  
2 or 3-piece suit suit  
Antique Rogue Ecu dresswear jacket  
Ted Baker black single breasted tuxedo jacket*





# A MOMENT IN LINEN

Dream of a sun-drenched wedding, where lightweight, breathable linen keeps you cool and comfortable all day long. Available in a range of soft shades, our linen offers a refined, natural texture that drapes effortlessly to create a relaxed silhouette without feeling boxy or stiff. It's versatile enough to dress up or down as a wedding guest or for a destination wedding.





*Alexandre soft blue linen  
2 or 3-piece suit  
Melka white crew tee*





Alexandre sage linen 2 or 3-piece suit  
Melka sage stripe linen shirt

Keep your style more relaxed with open collars and undone buttons. Add a pocket square to bring your look together.





*Melka oatmeal striped jacket  
Melka oatmeal striped trousers  
Melka linen shirt*





## Book your suit appointment

Let us help you find the perfect suit for your wedding, whether you're the groom, groomsman, or guest. Our expert fitters will guide you through our ranges, take your measurements, and create styles that match your vision.

## Fit and measuring service


Enjoy a free 60-minute appointment for up to 5 people, whether you're booking individually or coordinating your entire wedding party.

## Custom suits

Visit our Suit Direct Studio to design your own suit. Select from carefully curated options such as fabric, lining and buttons, and add personal touches to every detail, for a custom-made suit that's 100% you.

Available in selected stores

 Free UK delivery (over £175)

 Free returns

 Free Click & Collect



Scan to book  
an appointment



# OUR STORES

## ASHFORD

Suit Direct, Unit 41, Ashford Designer Outlet, Kimberley Way, Ashford, TN24 0SD

## BIRMINGHAM

Suit Direct, 41-42 Cannon Street, Birmingham, West Midlands, B2 5EE

## BLUEWATER

Suit Direct, Unit U011, Upper Rose Gallery, Bluewater, Greenhithe, Kent, DA9 9SP

## BRISTOL CRIBBS

Suit Direct, Unit LR53, Cribbs Causeway Centre, Bristol, BS34 5GG

## BRIDGEND

Suit Direct, Unit 7, Welsh Designer Outlet Village, Bridgend, CF32 9SU

## CASTLEFORD

Suit Direct, Unit 40, Junction 32 Outlet Shopping Village, Tomahawk Trail, Glasshoughton Castleford, WF10 4FR

## CHESHIRE OAKS

Suit Direct, Unit 58, Cheshire Oaks Designer Outlet, Kinsey Road, Ellesmere Port, CH65 9JJ

## DALTON PARK

Suit Direct, Unit 46, Dalton Park Outlet Shopping Centre, Murton, Co. Durham, SR7 9HU

## DONCASTER

Suit Direct, Unit 26, White Rose Way, Lakeside Village, Doncaster, DN4 5PH

## FENCHURCH ST

Suit Direct, Unit B, 155 Fenchurch St, London, EC3M 6AL

## EXETER

Suit Direct, 6 High Street, Exeter, EX4 3LF

## GATESHEAD

Suit Direct, Unit 1.24a, Galleria Metro Centre, Gateshead, NE11 9YG

## GLOUCESTER

Suit Direct, Unit 50/51 Gloucester Quays Outlet Shopping, St Ann Way, Gloucester, GL1 5SH

## HATFIELD

Suit Direct, Unit 10, Level 3, The Galleria Outlet Shopping, Comet Way, Hatfield, AL10 0XR

## HIGH WYCOMBE

Suit Direct, Unit 10, 30 Newland Street, Eden Shopping Centre, High Wycombe, HP11 2BY

## KINGSTON

Suit Direct, Unit G7, The Bental Centre, Wood Street, Kingston upon Thames, KT1 1TP

## LEICESTER

Suit Direct, Unit LL91, Lower Mall, Highcross, Leicester, LE1 4FS

## LIVINGSTON

Suit Direct, 335 The Elements, Livingston, EH54 6GS

## MAIDSTONE

Suit Direct, 16 Fremlin Walk, Maidstone, ME14 1QP

## MANSFIELD

Suit Direct, Unit 51, East Midlands Designer Outlet, Mansfield Road, South Normanton, Alfreton, DE55 2JW

## MERRYHILL

Suit Direct, Unit L97, Merry Hill Centre, Brierly Hill, Dudley, DY5 1QX

## MEADOWHALL (SHEFFIELD)

Suit Direct, 23 Park Lane, Meadowhall Centre, Sheffield, S9 1EP

## MILTON KEYNES

Suit Direct, SU42, Midsummer Place Shopping Centre, 67 Midsummer Place, Milton Keynes, MK9 3GB

## MONUMENT MALL

Suit Direct, Unit SU8, Monument Mall, Blackett Street, Newcastle, NE1 7AJ

## PLYMOUTH

Suit Direct, Unit 34a, Upper Mall, Drakes Shopping Centre, Plymouth, PL1 1EA

## SOUTHAMPTON

Suit Direct, Unit SU49 Lower Level, West Quay Shopping Centre, Southampton, SO15 1QE

## STRATFORD

Suit Direct, Unit 51, Lower Mall, Westfield Shopping Centre, Stratford, London, E20 1HG

## STREET

Suit Direct, Unit 74 Farm Road, Clarks Village Shopping Centre, Street BA16 0BB

## SWINDON

Suit Direct, Unit 96, Swindon Designer Outlet, Kemble Drive, Swindon, SN2 2DY

## WHITE CITY

Suit Direct, Unit SU1138A, Level 40, Westfield, White City, London, W12 7GF





[www.suitdirect.co.uk](http://www.suitdirect.co.uk)



**SUIT DIRECT**